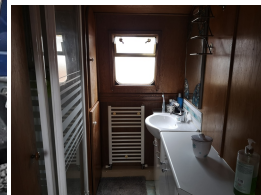


*****SOLD*** Liverpool Boats - 57 Widebeam**

£ 59,995



Description

57' Liverpool Boats 2005 Widebeam. Powered by an Isuzu 55hp engine, this well-priced liveaboard style boat would be ideal for a small family or couple alike. Her hull is 2005 but her fit-out was completed in 2006. Her layout is suited to a small family having 3 separate cabins, 1 double and 2 singles, however the single cabins could easily be removed to create a much larger lounge area if only 2 berths are required. The current owners have seen their family grow up on the boat and allow their own privacy with the great 3 cabin layout. Her comprehensive inventory includes all that would be expected in a liveaboard boat including diesel fired central heating with radiators, solid fuel stove, Oven, 4 ring hob, Washing Machine, 240v Inverter, Walk-in shower and much more. Her layout comprises of an open plan galley and saloon with 2 sofas and a large flat screen TV. Her galley has various appliances including gas oven & hob, microwave (240v) washing machine (240v) Fridge (240v) and an all-important wine rack! Forward of the main saloon are the 2 smaller single cabins. These were designed for 2 separate children but can be removed to create a larger saloon and this then steps out into the bow area of the vessel. The main double cabin is set at the stern as you enter the boat via a small stairway. This comprises of a sizeable double bed and cupboard storage. She has just undergone a repaint externally and only minor TLC will be required internally to make her a great liveaboard. For more information or to arrange a viewing, please call our marina office on 01405 816992.

Sales status: sold

Manufacturer: ***SOLD*** Liverpool Boats

Model: 57 Widebeam

Year built: 2005

Length: 17.37 m

Beam: 3.05 m

Draft: 0.61 m

First launch: 2006

No. of previous owners: unknown

Condition: Used

Sale Type: Used

Sale: On behalf of customer

Propulsion: Inboard

Steering: Tiller steering

Engine manufacturer: Isuzu

No. of engines: 1

HP: 55

Fuel: Diesel

Material hull: Steel

No. of cabins: 3

Headroom: 2 m

Material deck: Steel

No. of berths: 4

WC & bathrooms: 1
